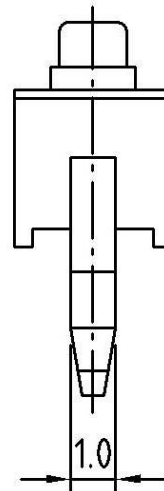
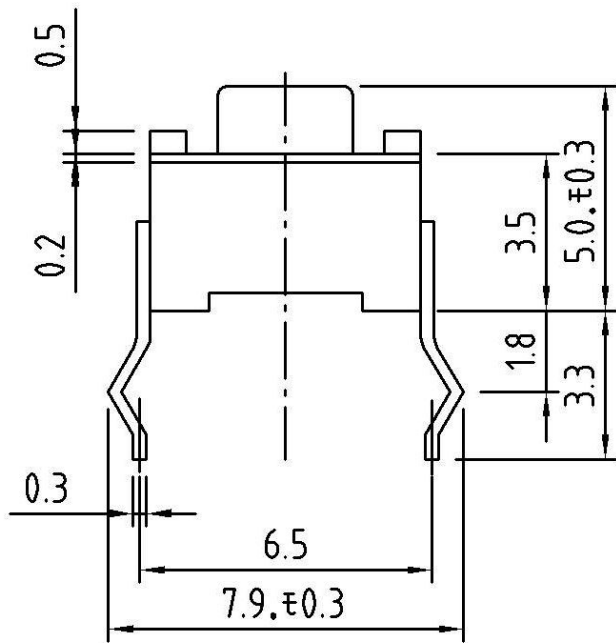
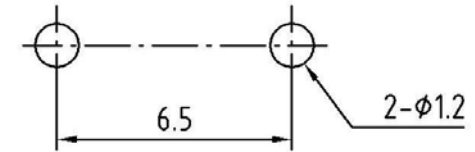


CIRCUIT



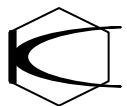
P.C.B LAYOUT



1. Rating : DC 12V. 50mA.
2. Travel : 0.25±0.1m/m
3. Operating Force : 180±30gf (N)

or 250+50pf(P)

5	CONTACTOR	C5210R-EH t=0.05	1	Ag PLATING
4	TERMINAL	BRASS t=0.2	1	Ag PLATING
3	STEM	NYLON 66 G30%	1	UL 94
2	COVER	SPCC	1	Ni PLATING
1	BASE	NYLON 66 G30%	1	UL 94
ITEM	DESCRPTION	MATERIALS	Q'TY	TREATMENT



銓基電子股份有限公司
ROKI ELECTRONICS CO., LTD.

PART NAME : TACT SWITCH

PART NO : TS05-□□-PF

TOLERANCE : ±0.2 mm

SCALE :

UNIT : mm

DESIGN :

